

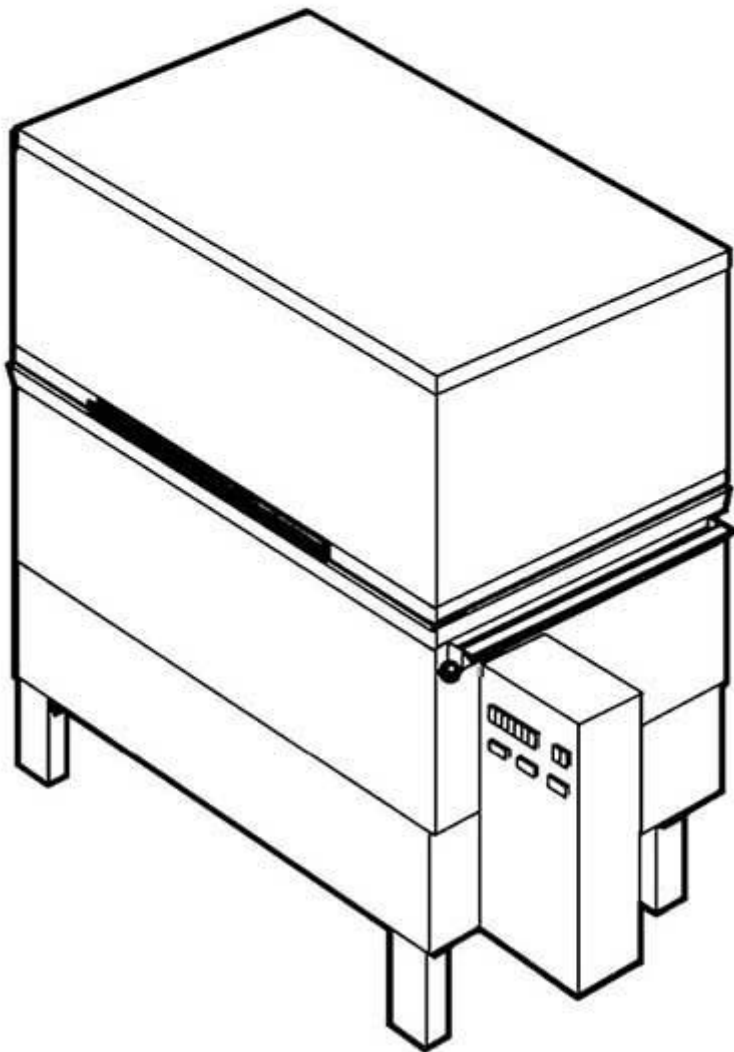
winterhalter

Spare Parts GS 100/1

Edited 5/92

Revised 01/05

Part no. 89000875



Summary

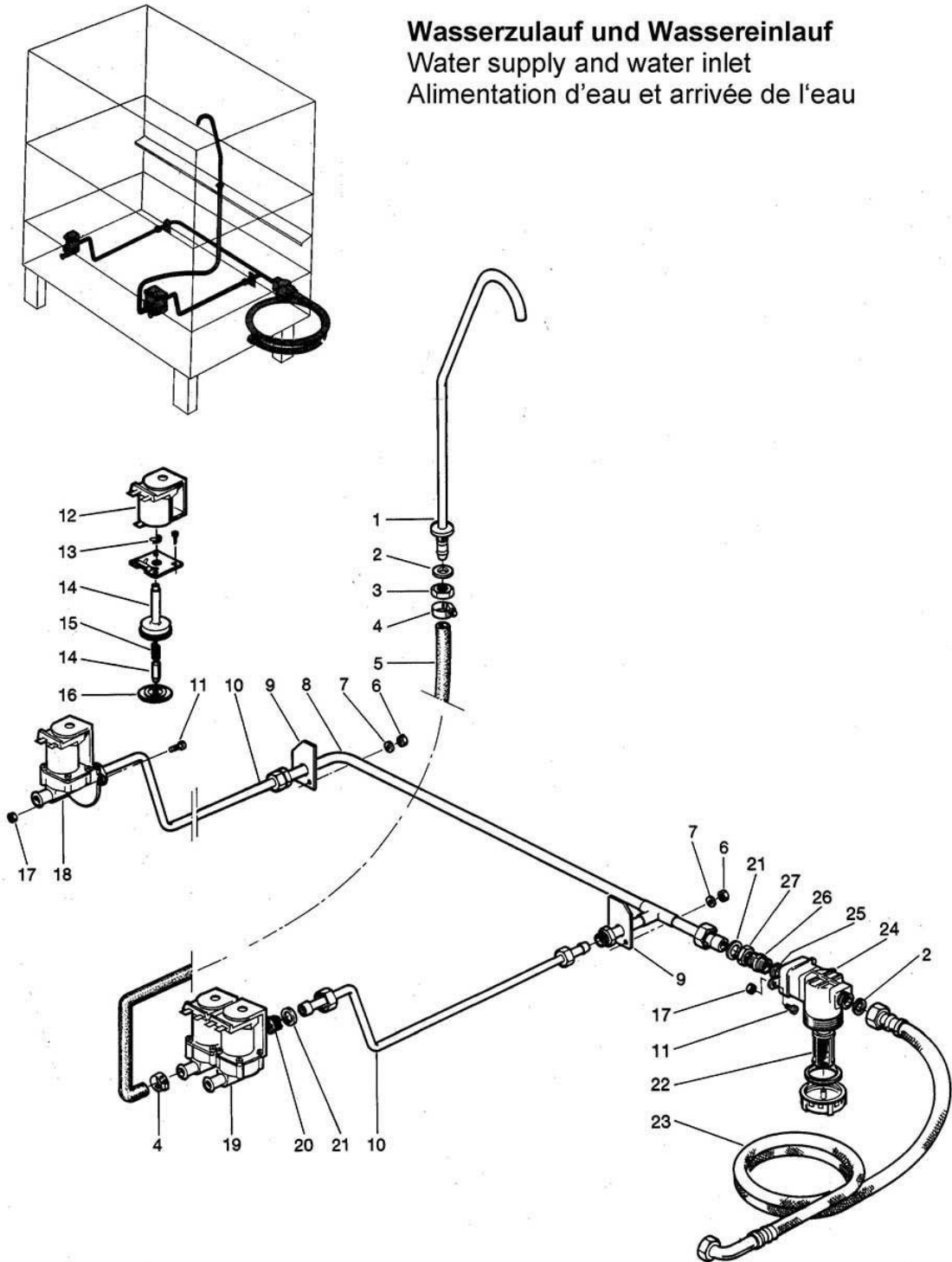
Water supply and water inlet	page 1 and 2
Water drain, tank heating and Mediamat	page 3 and 4
Wash system I	page 5 and 6
Wash system II	page 7 and 8
Rinsing I	page 9 and 10
Rinsing II	page 11 and 12
Hood guide and weight box	page 13 and 14
Hood locking, limit switch and rack support	page 15 and 16
Hood, trough and sieves	page 17 and 18
Panel	page 19 and 20
Electrical parts I	page 21 and 22
Electrical parts II	page 23 and 24
Electrical parts III	page 25 and 26
Electrical parts IV	page 27 and 28

Racks and accessories see separate list.

Parts that have the note " Part made to order only!" are not in stock. This parts are made specially for your order and have a delivery time. They are not returnable.

GS 100/1

Wasserzulauf und Wassereinlauf
Water supply and water inlet
Alimentation d'eau et arrivée de l'eau



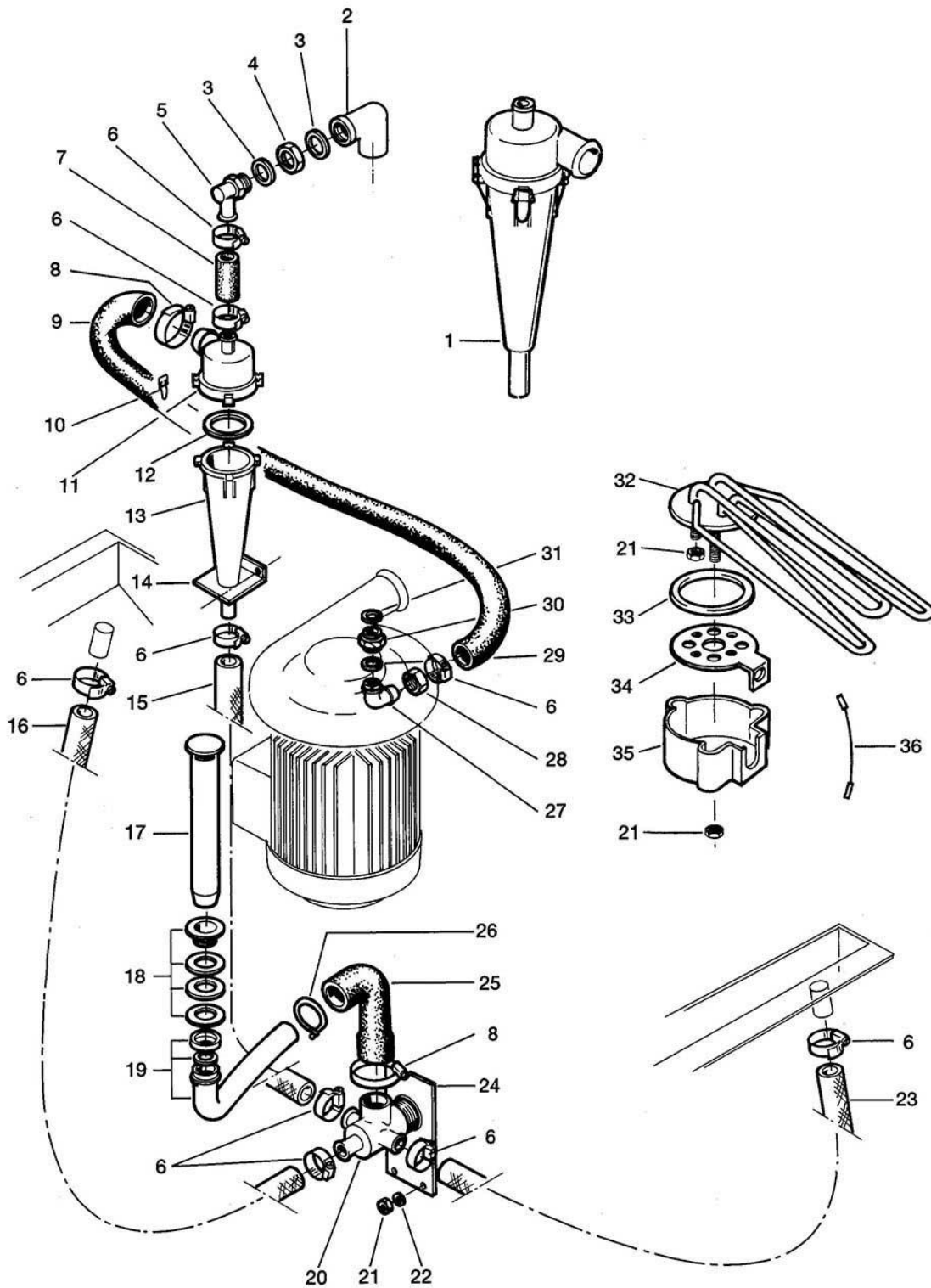
GS 100/1

Water supply and water inlet

Pos.	Designation	Part no.	Notes
1	Tank inlet cpl.	55 04 032	Part made to order only!
2	Seal \varnothing 24 x \varnothing 17 x 2,0	80 002241	
3	Locking nut G 3/8"	30 09 200	
4	Hose clip \varnothing 14 - \varnothing 24	28 02 108	
5	Tank inlet hose	40 03 050	cut to 850 mm
6	Dome head nut M 5	21 10 303	
7	Washer \varnothing 5,3	22 01 300	
8	Water supply distributor cpl.	61001640	
9	Supporting plate		
10	Supply pipe cpl.	61001390	
11	Lens head screw M 4 x 10	20 10 302	
12	Solenoid coil 220/240 V 50/60 Hz		Replaced by solenoid valve compl.
13	Spring		
14	Plunger with bush		
15	Spring		
16	Diaphragm		
17	Hexagon nut M 4	21 01 302	
18	Single solenoid valve 220 V 50 Hz	31 06 180	
19	Double solenoid valve	31 06 182	
20	Fine dirt filter red	31 06 118	
21	Seal \varnothing 24 x \varnothing 19,5 x 1,5	27 09 010	
22	Filter for dirt trap	31 06 135	
23	Hose \varnothing 15 x 2000, G 3/4"	29 01 316	
24	Dirt trap	80002153	
25	O-ring \varnothing 20 x 3,5	27 07 040	
26	Double nipple \varnothing 30 x 45, G 3/4"	61002764	
27	Locking nut G 3/4" x 5	61002626	

GS 100/1

Wasserablauf , Tankheizung und Mediamat Water drain, tank heating and Mediamat Écoulement, chauffage de la cuve et Médiamat



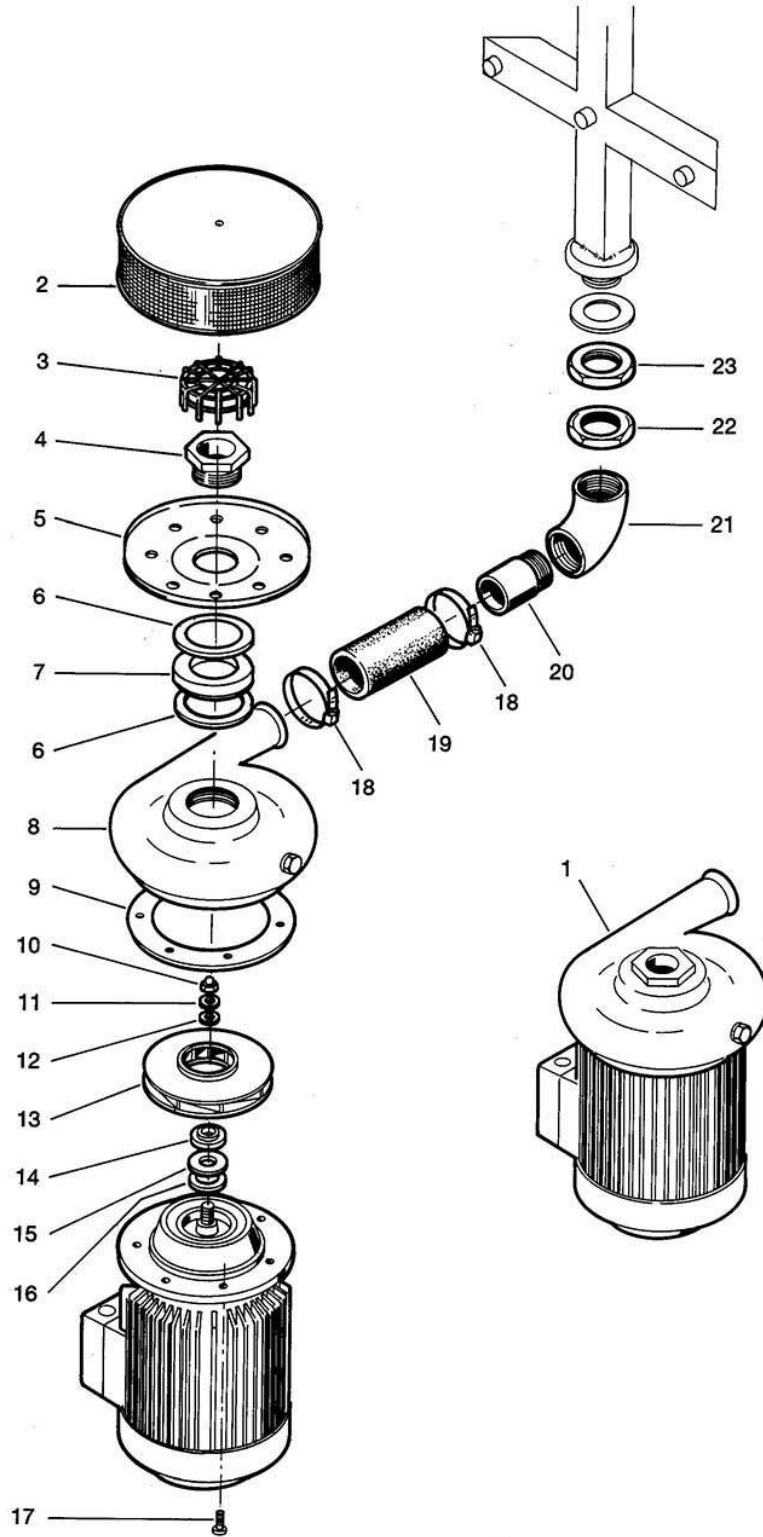
GS 100/1

Water drain, tank heating and Mediamat

Pos.	Designation	Part no.	Notes
1	Mediamat cpl.	55 27 040	
2	Angle G 1/2"	30 02 204	
3	Seal ø 28 x ø 21 x 2	27 09 011	
4	Hexagon nut G 1/2"	30 09 212	
5	Mediamat connection G 1/2"	35 01 155	
6	Hose clip ø 20 - ø 30	28 02 109	
7	Hose ø 18 x 3,5 x 45 lg.	40 02 025	per metre
8	Hose clip ø 32 - ø 52	28 02 110	
9	Reduction hose ø 30 x ø 16 x 930	40 03 036	cut to 800 mm
10	End piece clip	28 04 041	
11	Head piece inlet ø 30	35 01 124	
12	O-ring 51 x 3	27 07 043	
13	Accelerator	35 01 035	
14	Supporting angle for Mediamat	61000658	
15	Hose ø 19 x 4 x 870 lg.	40 01 016	per metre
16	Hose ø 19 x 4 x 1210 lg.	40 01 016	per metre, for trough left
17	Stand pipe, overflow height 205	29 04 258	
18	Stand pipe valve G 1 1/4"	29 04 202	
19	Siphon cpl. G 1 1/4"	55 05 049	with seal and knurled nut
20	Mediamat drain	35 01 080	
21	Hexagon nut M 5	21 05 302	self-securing
22	Washer ø 5,3	22 01 300	
23	Hose ø 19 x 4 x 1010 lg.	40 01 016	per metre, for trough right
24	Mediamat drain support	61001343	
25	Reduction hose ø 40 / ø 32	40 03 037	
26	Hose clip	28 02 111	
27	Mediamat connection elbow	29 06 524	
28	Coupling nut G 3/4" x 21	29 07 203	
29	Seal ø 24 x ø 19,5 x 1,5	27 09 010	
30	Mediamat conn.nipple G 1/2" x G 3/4" x 32	30 11 502	
31	Seal ø 28 x ø 21 x 2	27 09 011	
32	Heating element angled 6 kW 220/380 V	31 03 025	
n.p.	Heating element angled 6 kW 240/420 V	31 03 042	
33	O-ring 46 x 6	27 07 069	
34	Heating element flange	31 03 067	
35	Cap for heating element	31 03 014	
36	Link wire	31 23 088	

GS 100/1

Waschsystem I Wash system I Système de lavage I



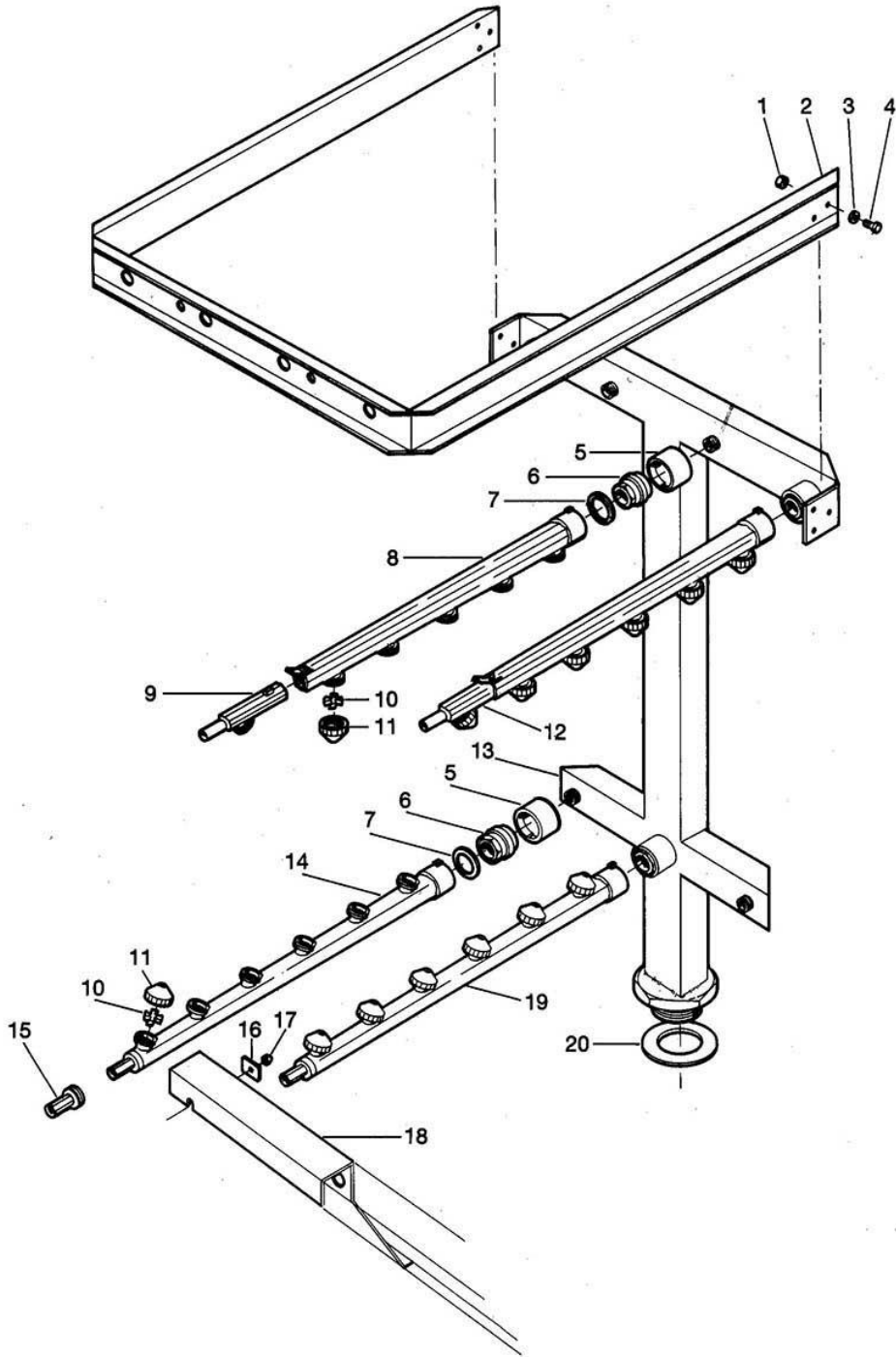
GS 100/1

Wash system I

Pos.	Designation	Part no.	Notes
1	Pump cpl. 2,7 kW right 230/400 V 50 Hz	55 14 011	
n.p.	Pump cpl. 2,7 kW right 220/380 V 60 Hz	55 14 112	
n.p.	Pump cpl. 2,7 kW right 240/420 V 50 Hz	55 14 065	
n.p.	Pump cpl. 2,7 kW left 220/380 V 50 Hz	84000050	
n.p.	Pump cpl. 2,7 kW left 220/380 V 60 Hz	84000052	
2	Pump sieve	55 13 004	
3	Suction sieve	61002500	
4	Pump nipple G 2" x 57	02 30 002	
5	Sieve plate	55 13 011	
6	Seal \varnothing 85 x \varnothing 60 x 2	27 09 005	
7	Spacer \varnothing 80 x 10 x 16	55 14 022	
8	Pump housing	55 14 060	
9	Seal \varnothing 190 x \varnothing 143 x 0,5	27 09 037	
10	Dome head nut M 10	21 10 306	
11	Washer \varnothing 10,5	22 01 206	
12	Seal M 10	22 08 506	
13	Pump impeller \varnothing 137	35 01 135	
14	Motor shaft seal		Sealing set 80002672 (incl. Pos. 9, 10, 11, 12, 16)
15	Seating ring		
16	Fitting disk \varnothing 30 x \varnothing 42 x 0,5	22 04 001	
17	Hexagon bolt M 6 x 18	20 01 014	
18	Hose clip \varnothing 62 - \varnothing 82	28 02 120	per metre
19	Pump hose \varnothing 60 x 8 x 140	40 02 007	
20	Nipple G 2" x 50	30 13 302	+ 18 cm 40 02 007 (Pos.19)
21	Angle 2", 90°	30 02 003	
22	Locking nut G 2" x 9	30 09 211	
23	Locking nut G 2" x 13	30 09 206	
n.p.	Cooling fan for pump motor	31 01 142	

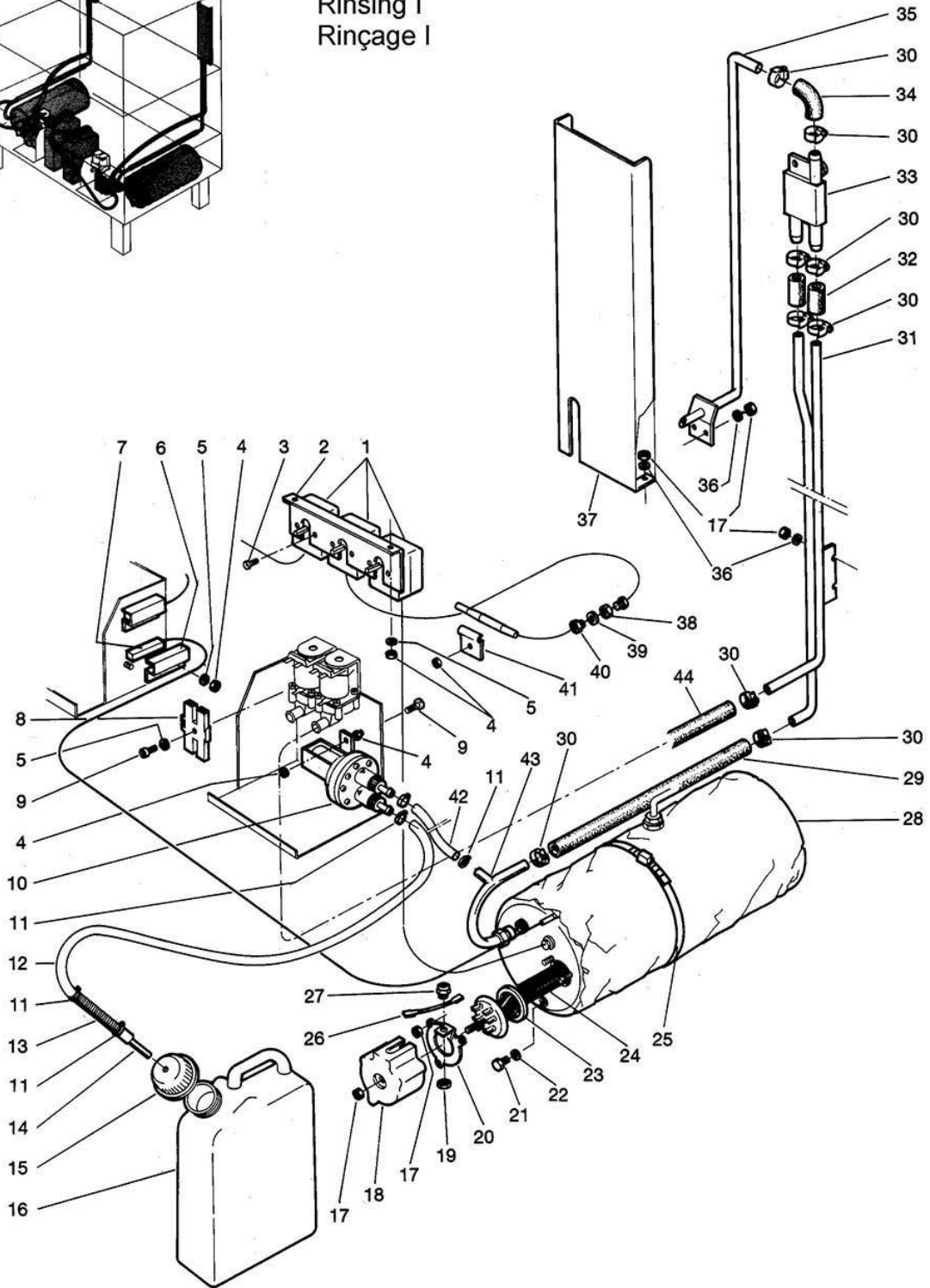
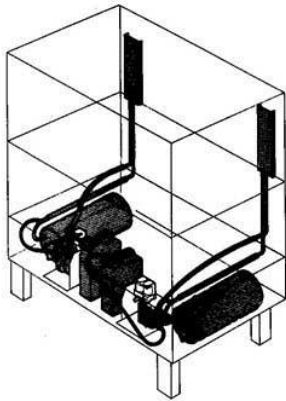
GS 100/1

Waschsystem II
Wash system II
Système de lavage II



GS 100/1

Nachspülung I Rinsing I Rinçage I



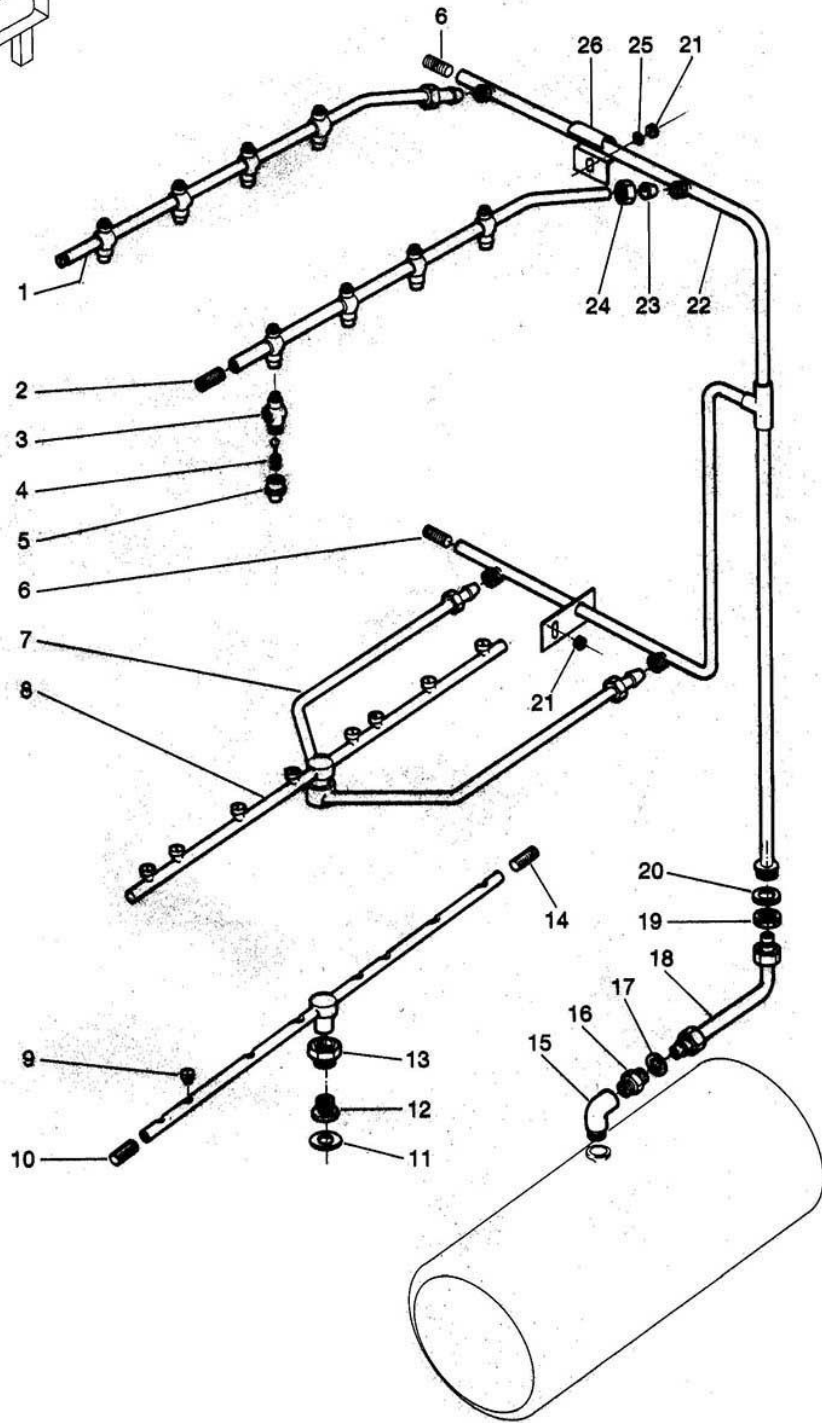
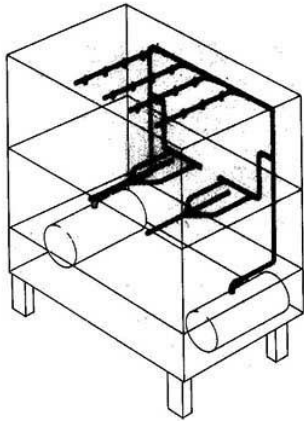
GS 100/1

Rinsing I

Pos.	Designation	Part no.	Notes
1	Thermostat length 1750	31 25 013	2 x boiler, 1 x tank
2	Thermostat support	61001503	Part made to order only!
3	Lens head screw M 4 x 8	20 10 310	
4	Hexagon nut M 4	21 01 302	
5	Washer \varnothing 4,3	22 02 302	
6	Support for safety thermostat	62001583	
7	Safety thermostat	31 25 022	
8	Coupling piece	31 12 021	
9	Pan head screw M 4 x 12	20 10 312	
10	Dispenser ELT 10 GS right	55 28 278	
11	Wire house clip	28 02 348	
12	Hose \varnothing 5 x 1,5 x 1250	40 01 024	per metre
13	Pressure spring 120 x \varnothing 19,2 x \varnothing 0,8	28 04 014	
14	Suction pipe \varnothing 6 x 1 x 150	61000693	
15	Screw cap	35 02 023	
16	Detergent container 3 l	35 02 004	
17	Hexagon nut M 5	21 01 303	
18	Cap for heating element	31 03 014	
19	Hexagon nut PG 13	31 10 041	
20	Clamping disk cpl.	55 19 018	
21	Hexagon bolt M 10 x 14	20 01 352	
22	Seal \varnothing 18 x \varnothing 10 x 1,5	27 03 003	
23	O-ring \varnothing 46 x 6	27 07 069	
24	Heating element cranked 6 kW 220/380 V	31 03 017	
n.p.	Heating element cranked 6 kW 240/420 V	31 03 043	
25	Hose clip \varnothing 50 - 215	28 02 126	
26	Link wire	31 23 088	
27	Cable gland PG 13	31 10 040	
28	Boiler base 480 lg.	55 12 032	6 kW + 12 kW
29	Hose \varnothing 13 x 3,5 x 800	40 02 029	per metre
30	Hose clip \varnothing 14 - \varnothing 24	28 02 108	
31	Pipes for DVGW right cpl.	61001656	Part made to order only!
n.p.	Pipes for DVGW left cpl.	61001655	Part made to order only!
32	Hose \varnothing 13 x 3,5 x 50	40 02 002	
33	Top backflow restrictor	35 01 193	
34	Hose elbow \varnothing 13 x 4,5	40 03 001	
35	Ventilation right cpl.	61001657	Part made to order only!
n.p.	Ventilation left cpl.	61001658	Part made to order only!
36	Washer \varnothing 5,3	22 01 300	
37	Right screen	61002696	Part made to order only!
n.p.	Left screen	61002697	Part made to order only!
38	Hexagon nut M 14 x 1 x 5	31 25 002	
39	Seal \varnothing 20 x \varnothing 14,2 x 2,0	27 09 036	
40	Gland for thermostat	31 25 001	
41	Thermostat clip	55 19 011	
42	Hose \varnothing 5 x 1,5 x 120	40 01 024	per metre
43	Boiler inlet elbow cpl.	55 09 054	
44	Tank inlet hose 13 x 4 x 1300	40 03 050	2xsol.valve-backfl.restrictor., 1xwater inlet.

GS 100/1

Nachspülung II
Rinsing II
Rinçage II



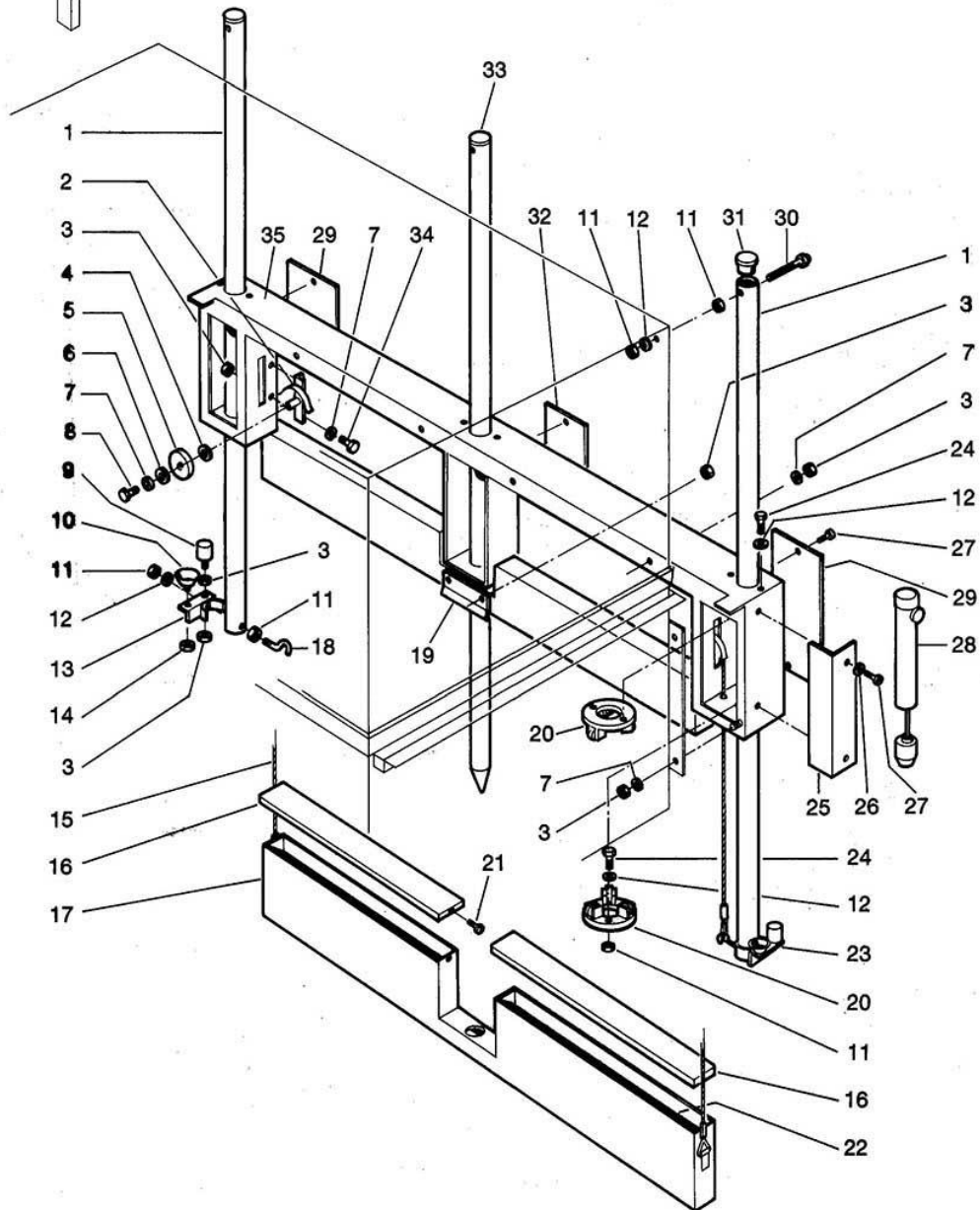
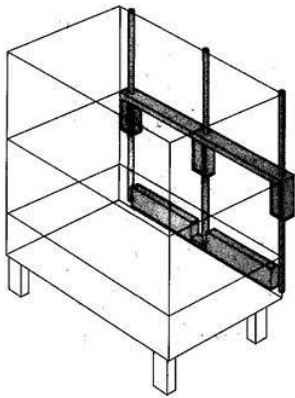
GS 100/1

Rinsing II

Pos.	Designation	Part no.	Notes
1	Top rinse pipe cpl. 613 lg.	61001824	
2	Grub screw M 9 x 40	20 30 502	
3	Hinged piece cpl.	55 10 008	with screw and nut
4	Spray jet swirl	65002764	
5	Spray jet cap	65002765	
6	Grub screw M 11 x 1 x 20	20 30 503	
7	Revolving arm support cpl.	61002735	
8	Revolving arm cpl.	55 10 091	
9	Flat rinse jet	29 10 312	
10	Grub screw M 9 x 6	29 10 238	
11	Seal \varnothing 34 x \varnothing 27 x 2	27 09 025	
12	Revolving arm screw M 14 x 1	20 19 204	
13	Revolving arm bush	35 01 161	
14	Grub screw with O-ring M 9 x 12	29 10 234	
15	Angle G 1/2"	30 02 301	
16	Double nipple G 1/2" x 30	70000459	
17	Seal \varnothing 24 x \varnothing 19,5 x 1,5	27 09 010	
18	Rinse connection cpl.	61001654	
19	Locking nut G 1/2" x 8	30 09 201	
20	Seal \varnothing 24 x \varnothing 19,5 x 1,5	27 09 010	
21	Hexagon nut M 4	21 05 202	
22	Rinse manifold right cpl.	61002689	
n.p.	Rinse manifold left cpl.	61002688	
23	Clamping ring \varnothing 10,2	29 07 500	
24	Coupling nut G 3/8" x \varnothing 10,2	29 07 200	
25	Washer \varnothing 4,3	22 02 302	
26	Pipe clamp	55 04 057	

GS 100/1

Haubenführung und Gewichtskasten
Hood guide and weight box
Guide du capot et boîte de poids



GS 100/1

Hood guide and weight box

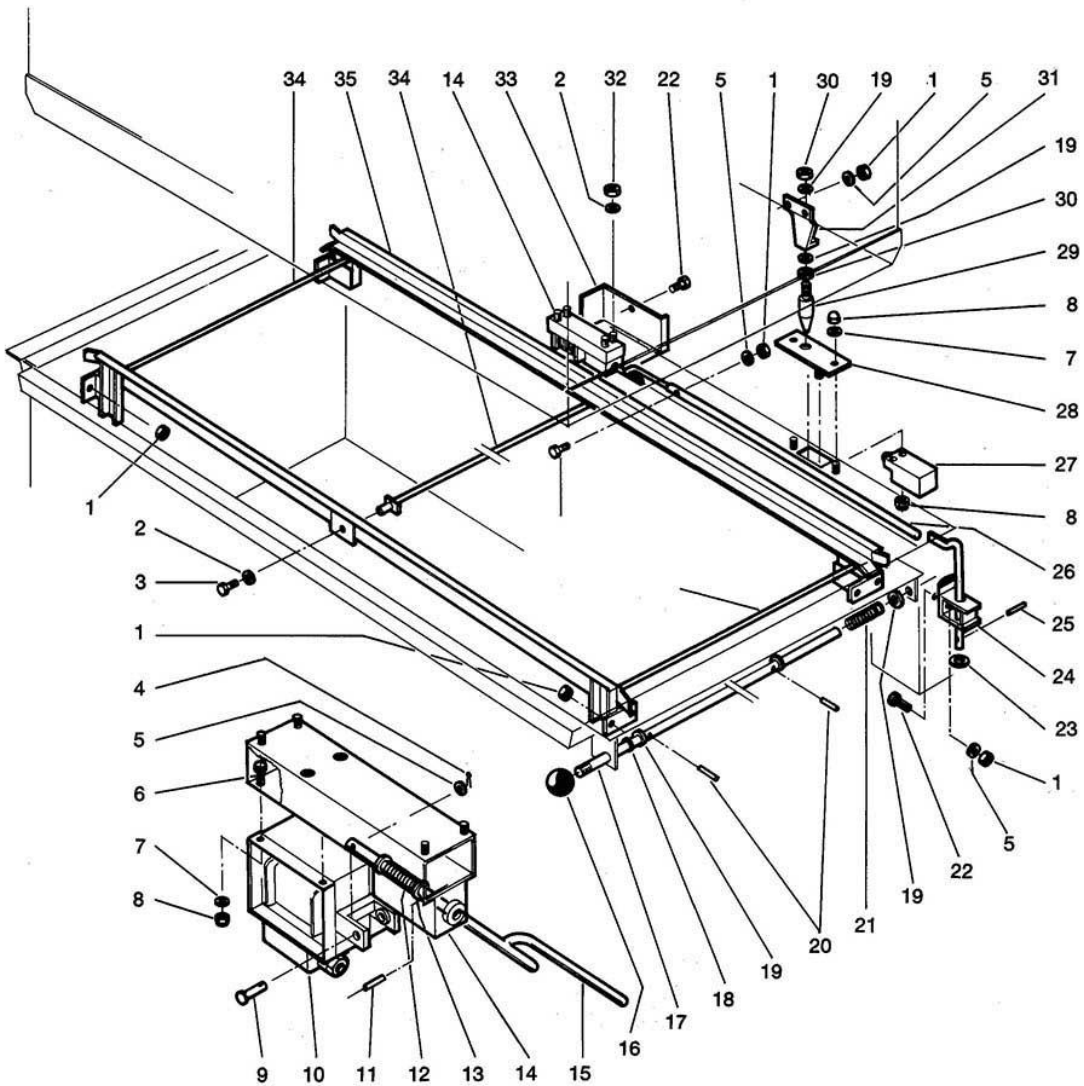
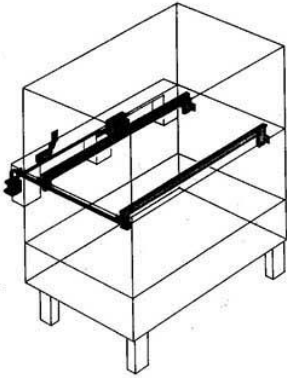
Pos.	Designation	Part no.	Notes
1	Exterior guide tube 1287 lg.	61002734	
2	Pulley support	61001450	
3	Hexagon nut M 6	21 01 304	
4	Bush for rope pulley	61002986	
5	Rope pulley	28 01 503	
6	Washer ø 10,5	22 02 206	
7	Washer ø 6,4	22 02 204	
8	Hexagon bolt M 6 x 10	20 01 332	
n.p.	Rope pulley support cpl.	61002784	consisting of pos. 2,4-8,15 Part made to order only!
9	Rubber buffer M 6	40 06 004	
10	Guide cap	55 22 009	
11	Hexagon nut M 8	21 01 305	
12	Washer ø 8,4	22 01 303	
13	Buffer support left	55 20 104	
14	Hexagon nut M 4	21 05 201	self-securing
15	Wire rope D5 X 805	80000568	
16	Cover for weight box	61001464	
17	Weight box	55 21 011	without weights
n.p.	Weight box	61001389	with weights Part made to order only!
18	Eye screw M 8 x 70	55 27 183	
19	Conductor plate	61001923	Part made to order only!
20	Roller bracket cpl.	55 21 010	
21	Sheet-metal screw 3,5 x 9,5	20 23 001	
22	Weight plate	61002883	
23	Buffer support right	55 20 011	
24	Hexagon bolt M 8 x 35	20 01 003	
25	Support for shock absorber	61001440	
26	Washer ø 5,3	22 01 300	
27	Pan head screw M 5 x 10	20 10 322	
28	Shock absorber	55 22 001	2X
29	Cover for guide box	61001493	
30	Hexagon bolt M 8 x 60	20 01 351	
31	Pipe plug ø 34 x 44	28 14 502	
32	Cover	61001494	
33	Centre guide piece 1267 lg.	61002733	
34	Hexagon bolt M 6 x 16	20 01 306	
35	Guide box	61001382	Part made to order only!

GS 100/1

Haubenverriegelung, Endschalter und Korbträger

Hood locking, limit switch and rack support

Verrouillage du capot, commutateur de fin de course et support panier



GS 100/1

Hood locking, limit switch and rack support

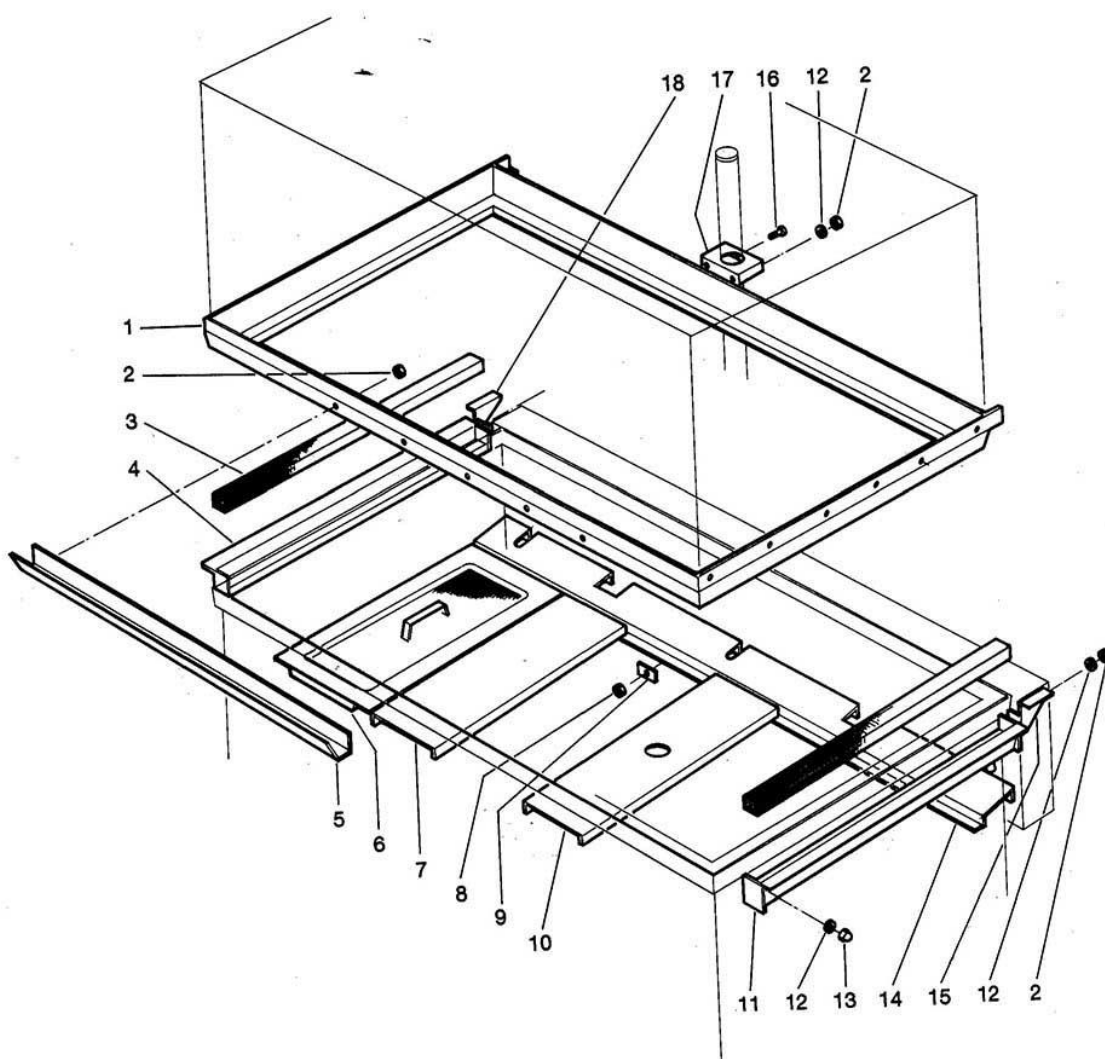
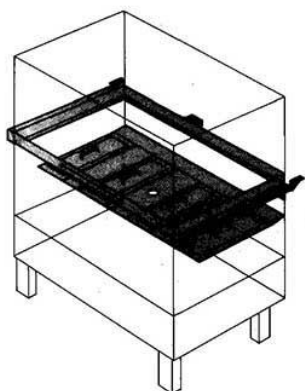
Pos.	Designation	Part no.	Notes
1	Hexagon nut M 5	21 01 303	
2	Washer \varnothing 6,4	22 01 302	
3	Hexagon bolt M 6 x 10	20 01 332	
4	Splint	31 07 010	for pos. 9
5	Washer \varnothing 5,3	22 01 300	
6	Cylinder screw M 4 x 12	61003085	4 pcs.
7	Washer \varnothing 4,3	22 02 302	
8	Hexagon nut M 4	21 05 300	self-securing
9	Stud	31 07 009	
10	Lifting magnet	31 07 002	
11	Dowel pin \varnothing 5 x 36	26 08 003	
12	Pressure spring \varnothing 18 x \varnothing 1,2 x 70	28 04 022	
13	Washer \varnothing 13	22 02 008	
14	Magnet support	61001455	Part made to order only!
15	Trigger fork	55 22 015	
n.p.	Hood release	55 22 004	consisting of pos. 4-15
16	Ball handle	28 05 010	
17	Trigger bar \varnothing 8 x 768	55 22 018	Part made to order only!
18	O-ring \varnothing 7 x 2,5	27 07 013	
19	Washer \varnothing 8,4	22 01 303	
20	Dowel pin \varnothing 4 x 20	26 08 002	
21	Pressure spring \varnothing 9,2 x \varnothing 0,8 x 120	28 04 014	
22	Hexagon bolt M 5 x 10	20 01 300	
23	Washer \varnothing 10,5	22 02 206	
24	Excenter	55 22 013	
25	Cotter pin \varnothing 2 x 25	23 15 001	
26	Trigger bar	55 20 007	Part made to order only!
27	Limit switch	31 24 216	
28	Limit switch plate	61002852	Part made to order only!
29	Operating pin \varnothing 12 x 55	28 14 340	
30	Hexagon nut M 8	21 01 305	
31	Operating angle	61002819	
32	Hexagon nut M 6	21 01 304	
33	Cover for guide box	61001492	Part made to order only!
34	Spacer	55 16 002	Part made to order only!
35	Rack guide	55 16 022	Part made to order only!
36	Hexagon bolt M 5 x 25	20 01 311	

GS 100/1

Haube, Wasserrinnen und Siebe

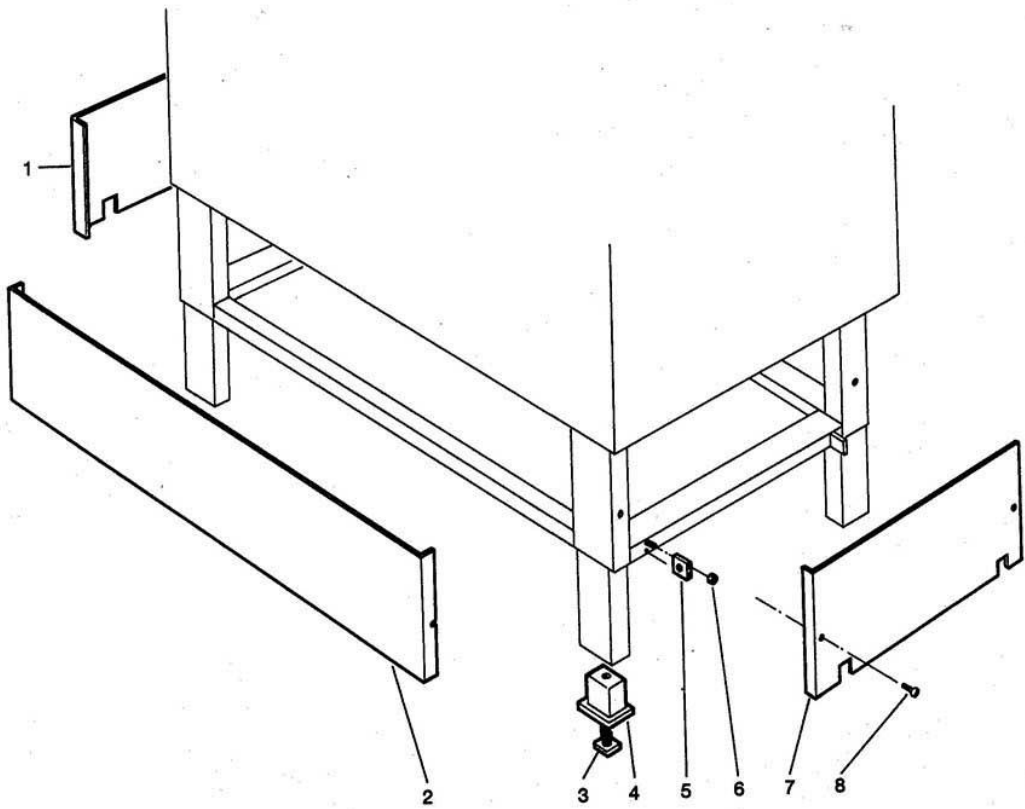
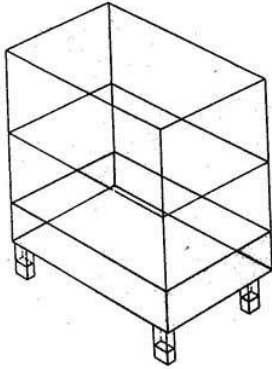
Hood, troughs and sieves

Capot, rigole à eau et tamis



GS 100/1

Verkleidung
Panel
Habillage



GS 100/1

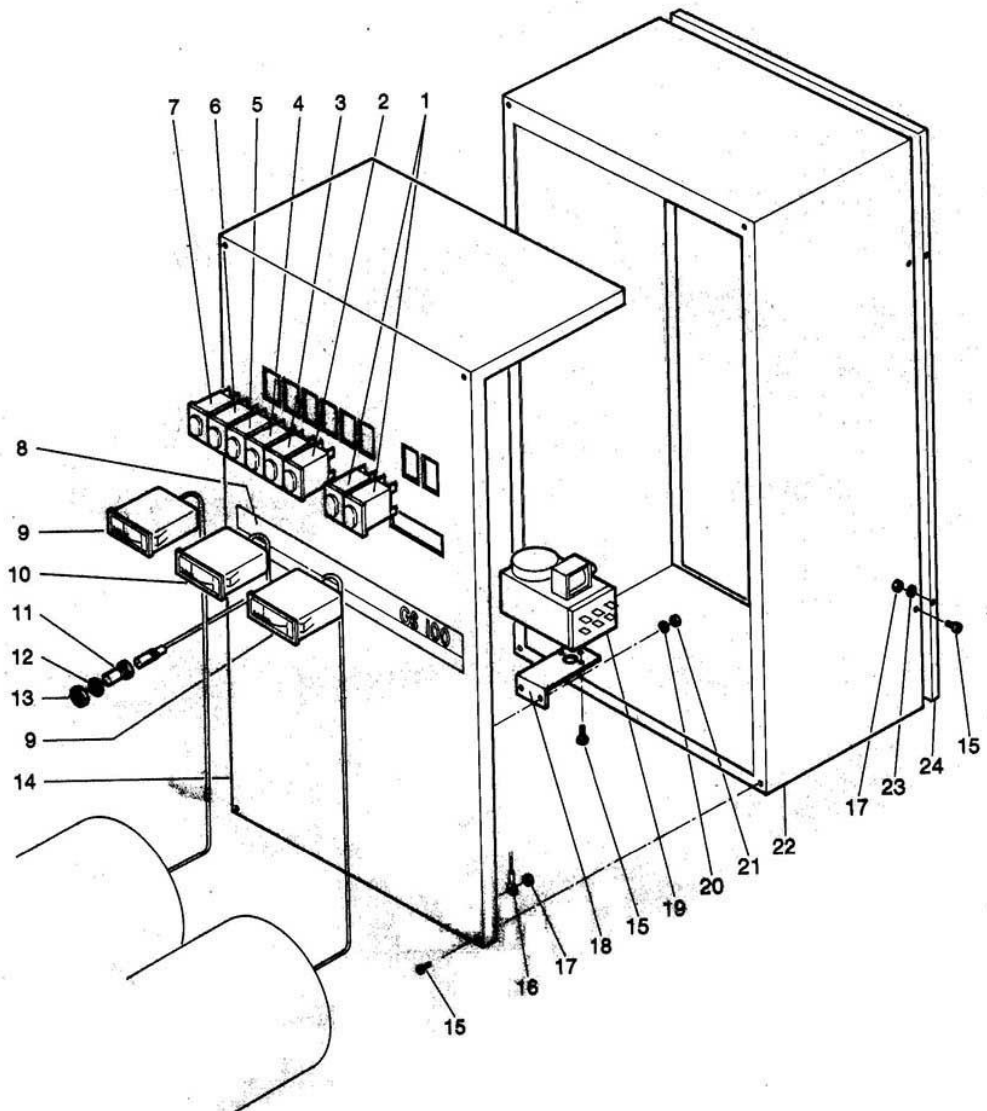
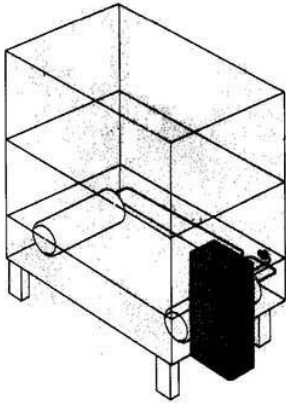
Panel

Pos.	Designation	Part no.	Notes
1	Left panel	55 03 128	Part made to order only!
2	Front panel	55 03 044	Part made to order only!
3	Foot G 3/4"	35 01 064	
4	Threaded insert G 3/4"	35 01 063	
5	Bracket for tables	35 01 068	
6	Hexagon nut M 4	21 01 302	
7	Right panel	55 03 127	Part made to order only!
8	Pan head screw M 5 x 10	20 10 322	

--

GS 100/1

Elektroteile I
Electrical parts I
Matériel électrique I



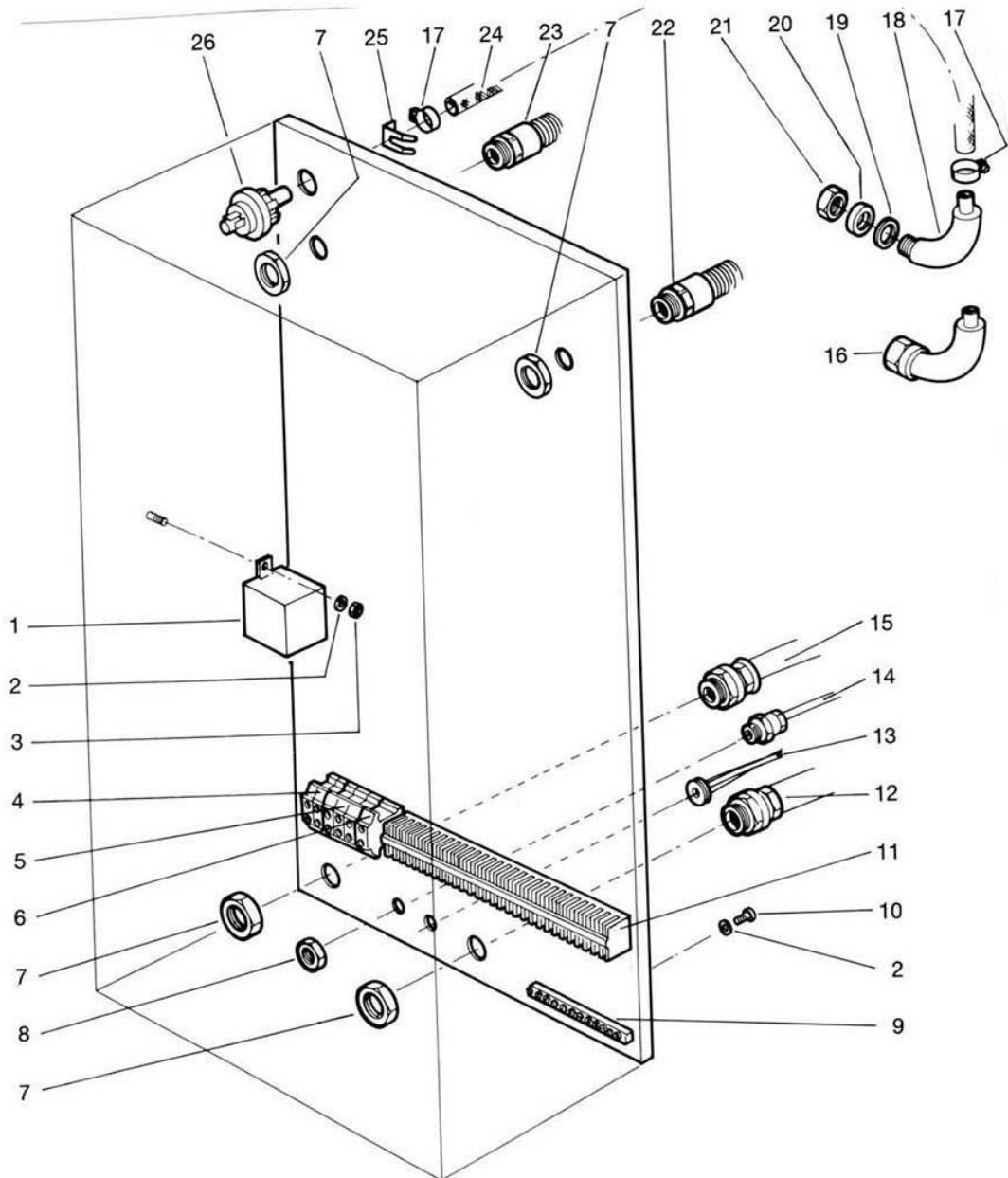
GS 100/1

Electrical parts I

Pos.	Designation	Part no.	Notes
1	Pressure switch white	31 24 175	WASH PROGRAMME LEFT-RIGHT
2	Pilot light white	31 08 064	PROGRAMME CYCLE
3	Pressure key button white	31 24 129	RINSING - MANUALLY
4	Pressure switch white	31 24 128	WASHING - MANUALLY
5	Pressure switch	31 24 166	PROGRAMME II
6	Pressure switch	31 24 165	PROGRAMME I
7	Pressure switch green	31 24 186	ON - OFF
8	Type plate GS 100/1	61002825	
9	Thermometer 85°C, length. 2,0 m	32 01 036	BOILER
10	Thermometer 58°C, length. 2,0 m	32 01 035	TANK
11	Gland for thermometer	32 01 030	
12	Seal \varnothing 19,9 x \varnothing 14,2 x 2	27 09 036	
13	Hexagon nut M 14 x 1	31 25 002	
14	Cover for control box cpl.	61002782	Part made to order only!
15	Lens head screw M 4 x 8	20 10 310	
16	Wire green/yellow	31 22 202	earth wire
17	Hexagon nut M 4	21 01 302	
18	Angle for programme switch	61001960	Part made to order only!
19	Programme switch	31 05 119	
20	Washer \varnothing 5,3	22 01 300	
21	Hexagon nut M 5	21 01 303	
22	Housing for control box	61002762	Part made to order only!
23	Washer \varnothing 4,3	22 02 302	
24	Control box bottom	61002765	Part made to order only!

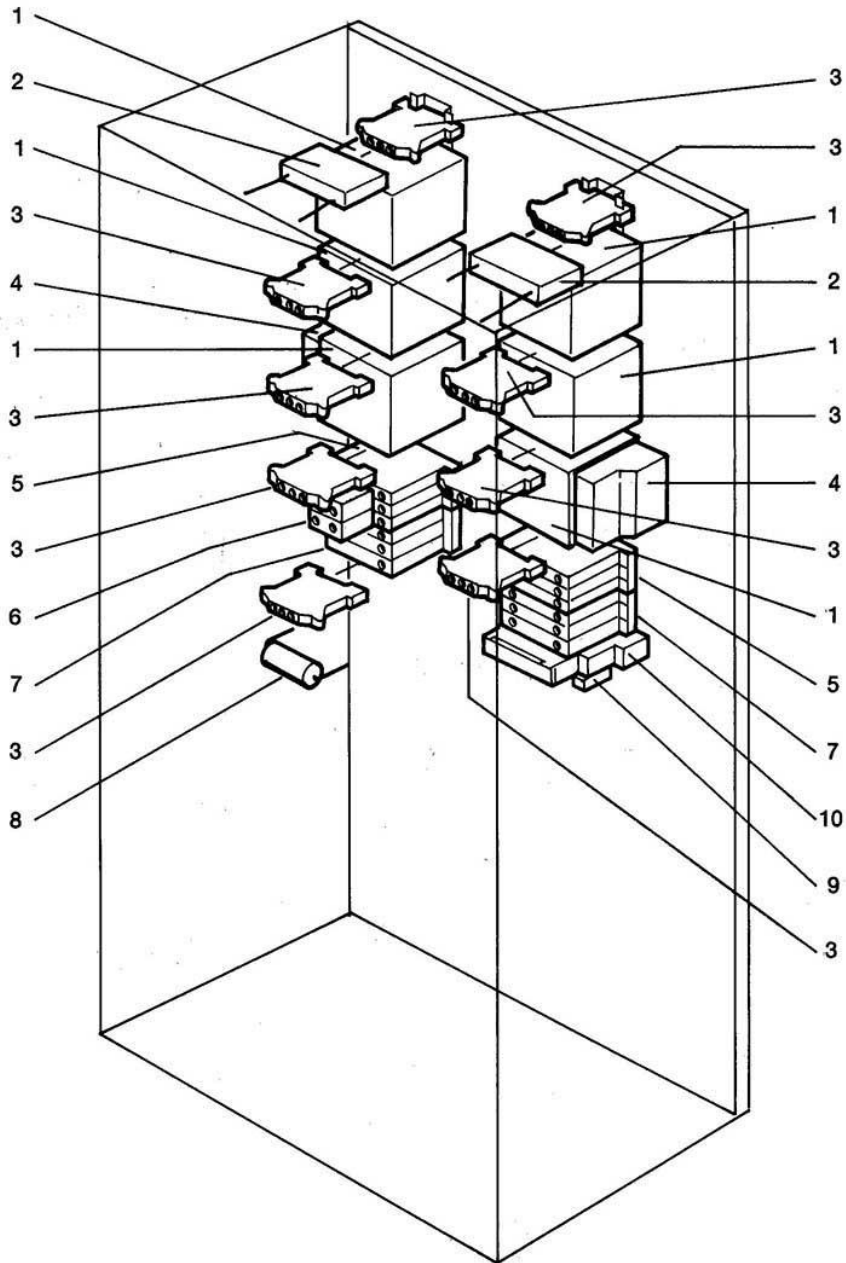
GS 100/1

Elektroteile II Electrical parts II Matériel électrique II



GS 100/1

Elektroteile III
Electrical parts III
Matériel électrique III



GS 100/1

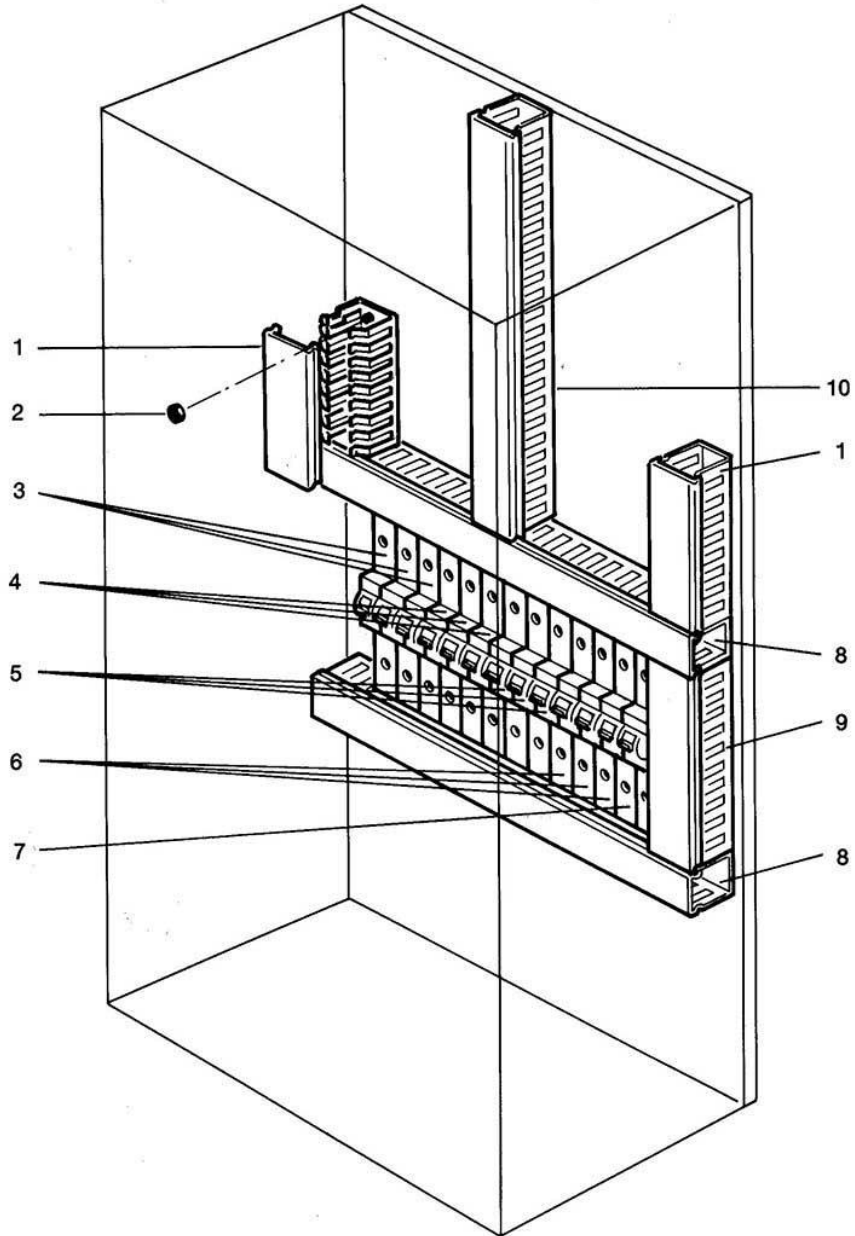
Electrical parts III

Pos.	Designation	Part no.	Notes
1	Contacteur 16	31 04 162	
2	RC-member cpl.	61002141	
3	Earth wire terminal yellow/green	31 09 064	
4	Overcurrent relay electronic; 5.7 - 18.9A	31 04 193	
5	Auxiliary contactor	31 04 114	
6	Module	31 04 116	
7	Auxiliary contactor	31 04 115	
8	Radio interference suppression capacitor	31 13 073	
9	Terminal block E/UK	31 09 051	
10	Wipe contact flick contactor	31 04 120	

--	--	--	--

GS 100/1

Elektroteile IV
Electrical parts IV
Matériel électrique IV



GS 100/1

Electrical parts IV

Pos.	Designation	Part no.	Notes
1	Cable trunking 95 mm long	31 20 103	per metre
2	Hexagon nut M 4	21 01 302	
3	Overload circuit breaker 16 Amp.	31 11 100	boiler and tankheating right
4	Overload circuit breaker 16 Amp.	31 11 100	boiler and tankheating left
5	Overload circuit breaker 16 Amp.	31 11 100	pump right
6	Overload circuit breaker 16 Amp.	31 11 100	pump left
7	Overload circuit breaker 6 Amp.	31 11 101	control
8	Cable trunking 300 mm long	31 20 103	per metre
9	Cable trunking 120 mm long	31 20 103	per metre
10	Cable trunking 258 mm long	31 20 103	per metre

--	--	--	--